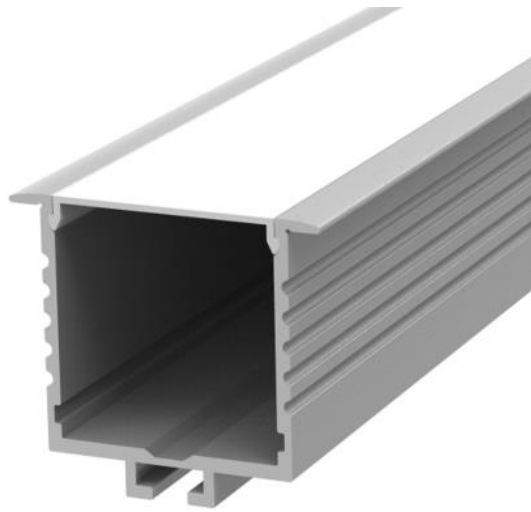


Razor Rec 44x40mm S

High Quality LED Linear Extrusion

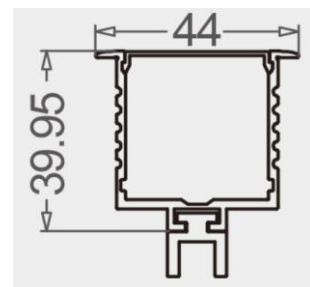


- Recessed-mount linear extrusion system with remote mount driver.
- High quality LED Strip used to ensure quality and performance
- Homogeneous light distribution
- Customized length's possible with 100mm increment
- Long system life time with 3 years system warranty*
- CE approval, UL certification

OSRAM

Technical Specification

System Power	4.8w/m	9.6w/m	14.4w/m	19.2w/m
Lumen Per Meter	480lm	960lm	1440lm	1920lm
Colour Temperature	2700K / 3000K / 4000K			
CRI Option	CRI 90+			
MacAdam	3			
Lifetime	30,000 hrs			
Dimming Option	DALI & TouchDim			
Dimension	(W) 44mm (Trim) x (H) 40mm			
Cut out size	35mm			
Installation	Recessed clips			
Finish Colour	Black, White & Natural Anodised Can be powdercoated any colour.			



* IES Files are available on request